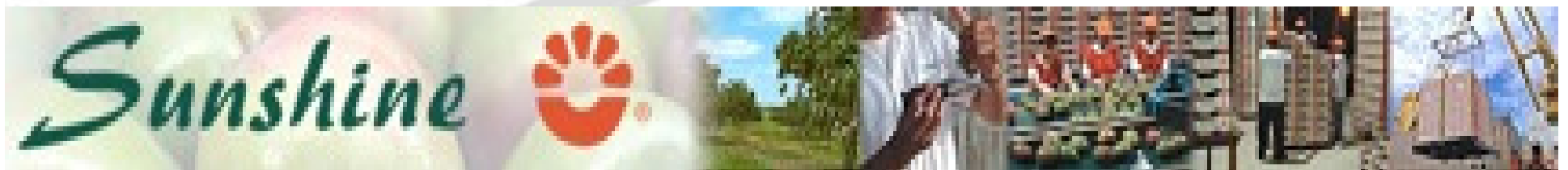


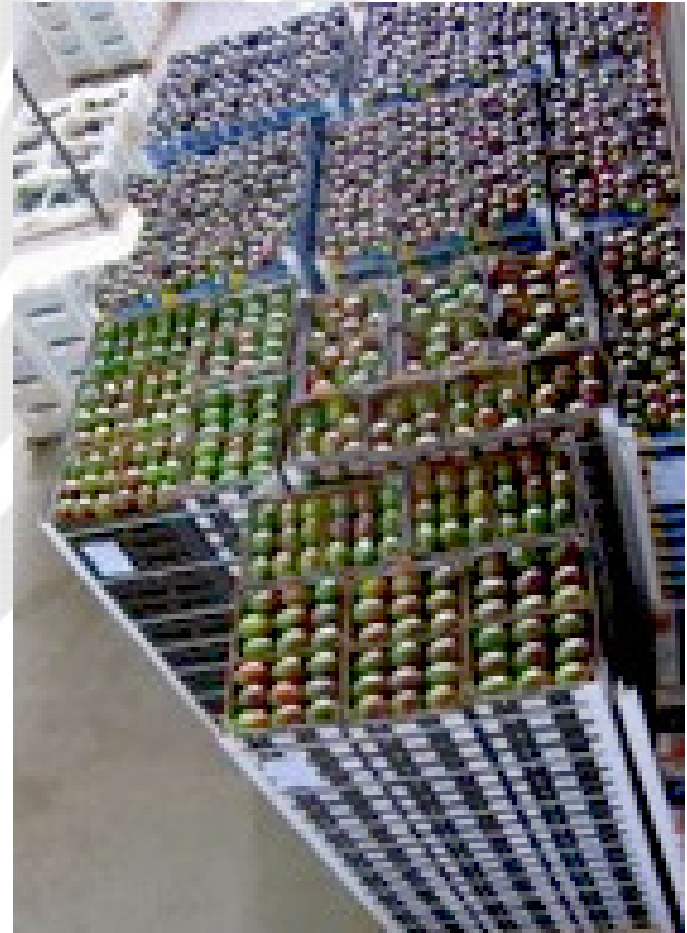
SUNSHINE EXPORT

JORGE WONG
OVERSEAS COMMERCIAL OFFICER
MARCH 24, 2009



SUNSHINE EXPORT: Prospects for our business

- **Mango consumption is expected to grow** more than other commodities in the next few years
- **In the USA the Mango Board is already promoting consumption of mango and investing a lot of money on marketing and research** - its positive nutritional factors are being recognized
- **The IQF Mango is also growing in demand** – High Peruvian quality is recognized, and consumers prefer Kent variety for frozen



SUNSHINE EXPORT: reasons for including FTP as an equity partner

- **Stabilize finances by capital injection** - Creation of a stronger capital base
- **Increase plant capacity** - Increase packing plant for US shipments
- **Construction of IQF Plant** - This would allow the entrance of Sunshine to a new niche, frozen fruit exports. – Allows a healthy Fresh Market
- **Fund Manager's connections with finance institutions**
- **Implementation of corporate governance in a previously family company**



SUNSHINE EXPORT: Assistance to the local community

- **In 2003 Sunshine led an initiative to formalize local farmers** - This was achieved by providing technical, financial and social assistance, provided by Sunshine Export
- **In 2004 a 3-year program to convert the farmers to organic, was started** - Funds were provided by the BID (Int. Development Bank)
- **In 2006 Sunshine created an NGO called Sol Radiante** - technical and social assistance to local farmers.



SUNSHINE EXPORT: In summary



- **Great opportunity** in our industry **but needed to strengthen our capital base** to be able to expand our company to take full advantage of it.
- As a family-owned Peruvian company, we also wanted to work with a reputable international partner to **transition to more formal corporate governance, broaden our sources of financing and benefit from the kinds of business support** services that our partners could bring.
- To achieve any of our objectives, we are **absolutely reliant on the local farmers and our employees**—they are the community we depend on and **their success is our success**. The programs we implement are a very important part of our business.

