



**Alberta
Energy
Regulator**

Engagement, Relationships, Trust

Becoming an empathic regulator

Kim Blanchette, vice president, Public Affairs and National
International Relations

September 15, 2017

What we Regulate

MORE
THAN

50

thermal/enhanced
in situ projects

4

coal processing
plants

9

oil sands
mines



6

producing
coal mines

5

bitumen
upgraders

OVER 220 AND 16

primary/enhanced
recovery projects
(in situ)

experimental
projects



OVER 167 000

operating natural gas and oil wells



OVER 422 000*

kilometres of pipelines

MORE
THAN 30 000

oil facilities

AND
CLOSE
TO

21 000

gas facilities

792

gas processing plants

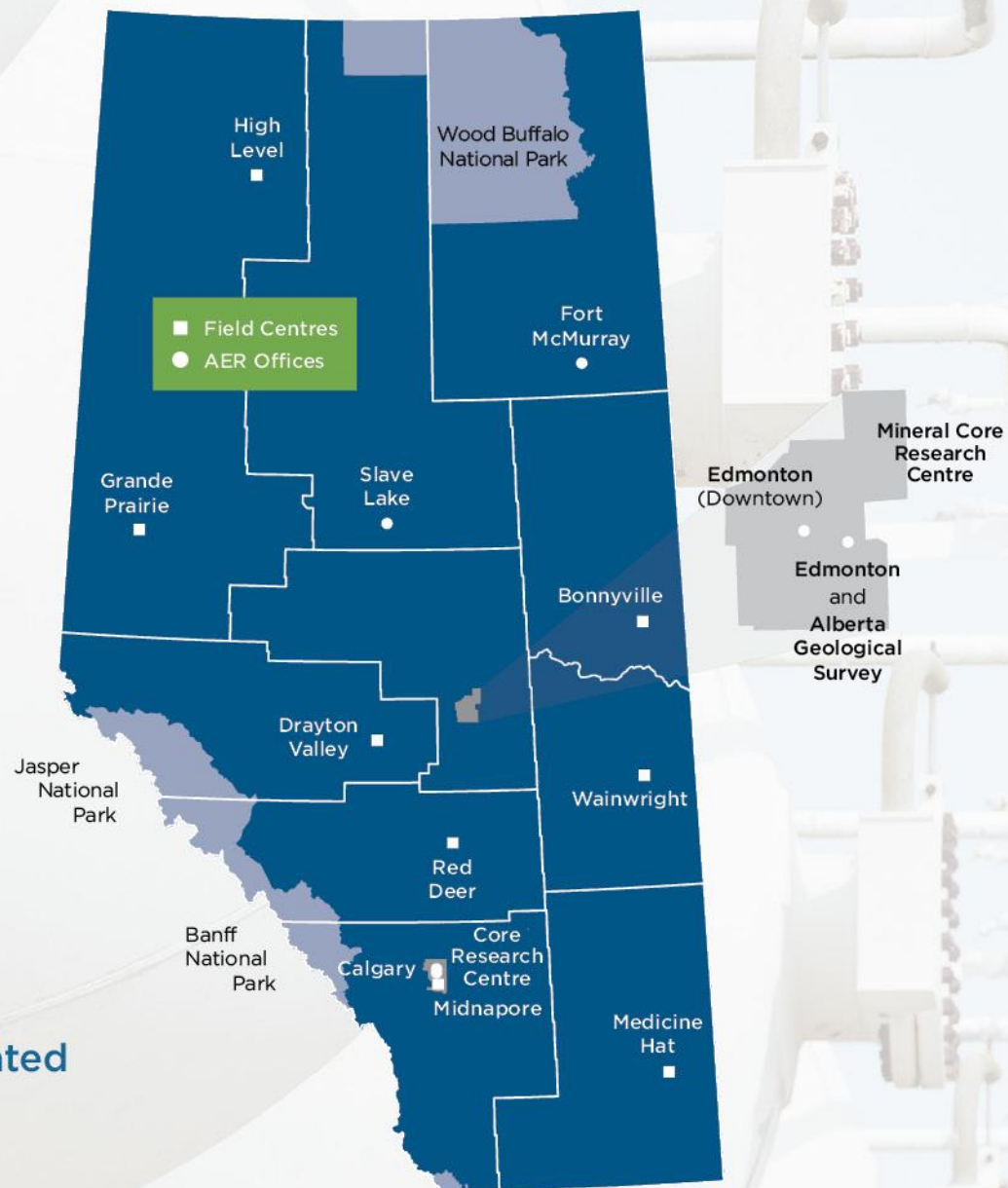
About the AER

1200
employees

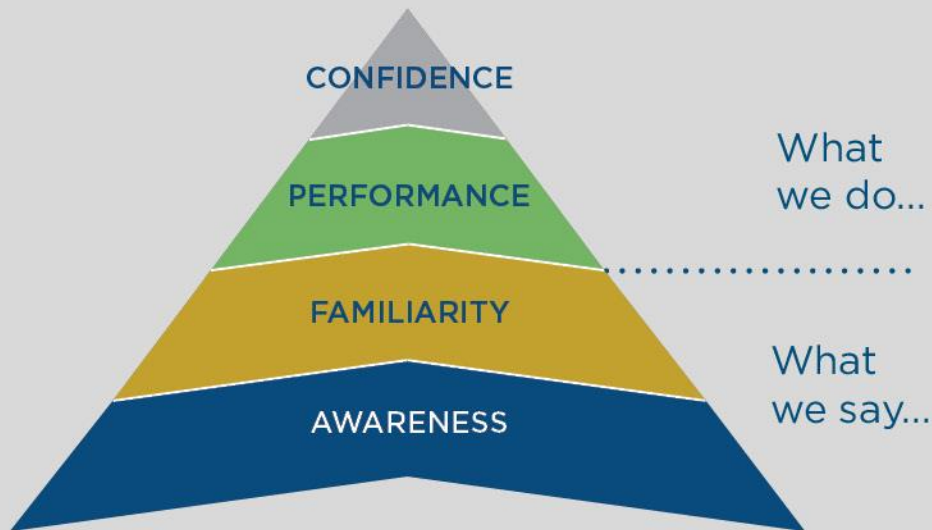
inspectors, technical staff,
scientists, investigators,
stakeholder engagement
specialists, mediators, lawyers,
regulatory experts, & others

15
locations

800+
companies regulated



Listening to Albertans



% Confidence in the AER



Albertans

82%



Stakeholders

77%

Albertans expect the AER to...



Ensure
public safety

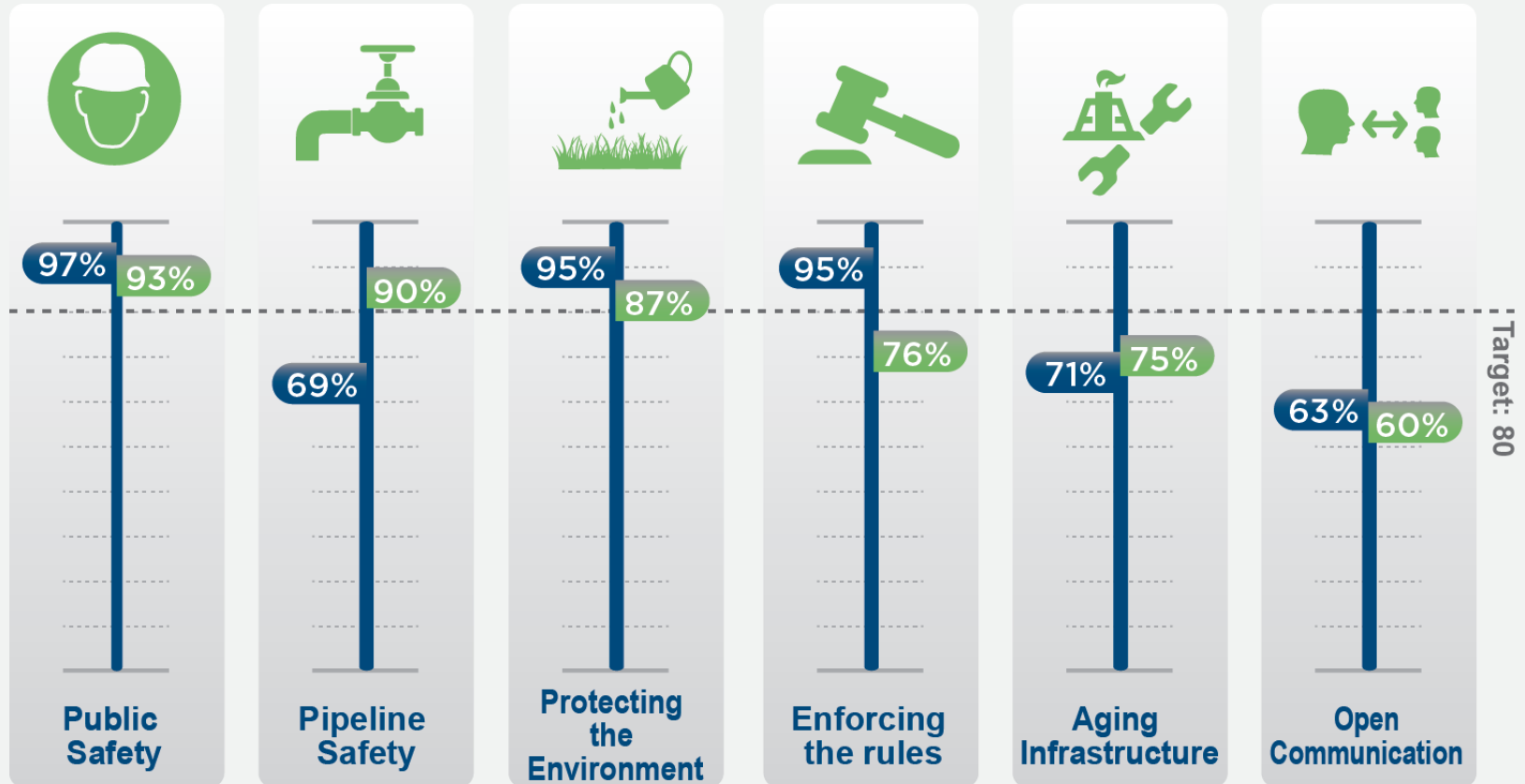


Protect the
environment



Enforce for
noncompliance

Tracking our performance



I = Importance P = Performance



Stakeholder Engagement

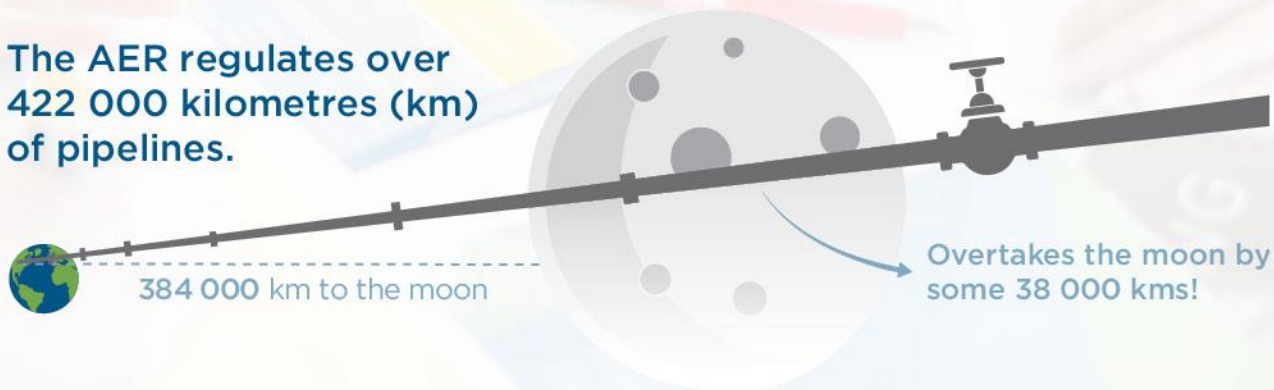
Compliance

Dashboard



Reporting on Our Performance

The AER regulates over
422 000 kilometres (km)
of pipelines.



Our Goal



High-consequence incident count

DECREASE OF

2%

by
March 31, 2017

from the previous two-year average



47 Wells, 1 Application, 1 Decision

The AER is piloting a new single application, single decision approach

Value of Production in Alberta



Pouring over the Spill



More Than Oil in Them Thar Hills



TO THE MOON, AND BEYOND

The AER regulates over 431 000 kilometres (km) of pipelines



CONNECT WITH US



SIGN UP WITH US!

Your Email...

Subscribe

Most Popular Stories



47 Wells, 1 Application, 1 Decision

31 October 2016



For What It's Worth

31 October 2016



Regulatory *Excellence*

UTMOST INTEGRITY

EMPATHIC ENGAGEMENT

STELLAR COMPETENCE



**Alberta
Energy
Regulator**