

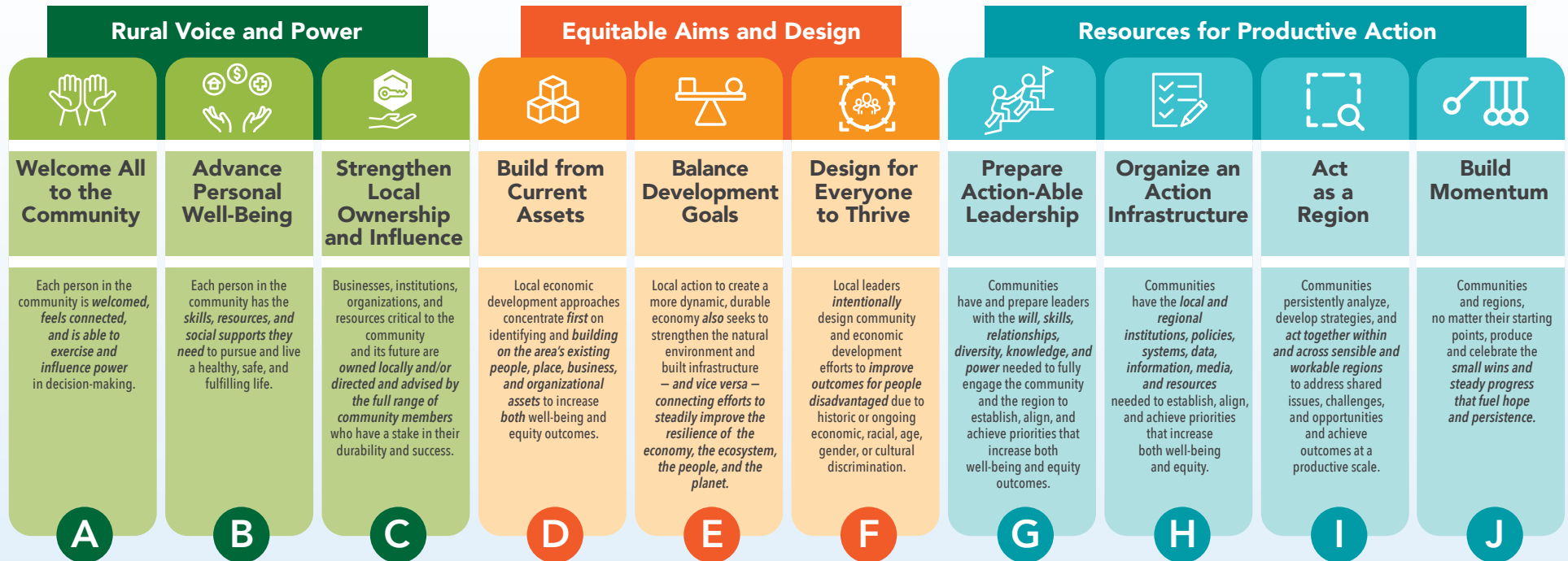


# LOCAL-LEVEL BUILDING BLOCKS



## THRIVE RURAL FRAMEWORK LOCAL-LEVEL BUILDING BLOCKS

The Local-Level Building Blocks include conditions on the ground in rural places and regions that **individual rural communities or regions can act on by themselves**. Each Building Block (A-J) is necessary because it has an impact on being able to achieve more widespread and equitable rural prosperity.



Use these Local-Level Building Blocks to take stock, target effort, and measure progress for action that a specific rural community or region can take on its own to improve the local conditions necessary for more widespread and fair rural prosperity. For each Building Block (A-J), ask:

- What is our starting point? How true is each statement for our community?
- What discriminatory practices or policies exist that keep us from making more progress in each Building Block?
- With this context in mind, what are our priorities: Which Building Blocks do we most need to strengthen to unleash progress on the others?
- What needs to happen next to strengthen our priority Building Blocks? And what will it take for us to make that happen?
- What would indicate progress in strengthening these Building Blocks? What would that progress look like over the next year?