



Reinventing Health Care: The Barriers to Innovation

Biographies of Participants



Basit Chaudhry, MD, PhD, is a medical scientist at IBM Research. In this capacity he develops new analytic methods and technologies to improve performance at the point of care and works on issues related to healthcare policy for IBM. Prior to joining IBM Dr. Chaudhry worked in the UCLA Division of General Internal Medicine and as a research scientist at the Health Division of the RAND Corporation. Dr. Chaudhry has participated in a number of policy related activities in healthcare and technology utilization with the Department of Health and Human Services and the Institute of Medicine. Dr. Chaudhry served on the President's Council of Advisors on Science and Technology (PCAST) Working Group on Health Information Technology and was one of the co-authors of the group's findings, *Report to the President - Realizing the Full Potential of Health Information Technology to Improve Healthcare for Americans: The Path Forward*.



Susan Dentzer is the editor-in-chief of *Health Affairs*, the nation's leading journal of health policy, and is an on-air analyst on health issues with the PBS *NewsHour*. She previously led the *NewsHour's* health unit, reporting extensively on-air about health care reform debates. She is an elected member of the Institute of Medicine and the Council on Foreign Relations. Ms. Dentzer graduated from Dartmouth, is a trustee emerita of the college, and chaired the Dartmouth Board of Trustees from 2001 to 2004. She currently serves as a member of the Board of Overseers of Dartmouth Medical School and is an Overseer of the International Rescue Committee, a leading humanitarian organization. She is also on the board of directors of Research!America, an alliance working to make research to improve health a higher priority.



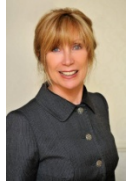
Carole Roan Gresenz, PhD, is a senior economist at the RAND Corporation and director of the Economics, Finance, and Organization program within RAND Health. Her recent work includes evaluation of state health care reform efforts, a study of the effects of the Affordable Care Act on firms' decisions to self-insure, and analyses of the spillover effects of high rates of uninsurance in a community on health care outcomes among the insured. Over the last five years, she has worked closely with city and county government agencies in the District of Columbia and Maryland on evaluations of local health care systems and programs. She also has a body of work on dispute resolution in the context of health care. Dr. Gresenz is the former Associate Director of the RAND Institute for Civil Justice (2003-2007).

Joe Hutter, MD, is a practicing physician and fellow in the Institute for Health Care Delivery Research at Intermountain Healthcare. He worked on the Senate HELP Committee during health reform, 2009-2010, as a Brookings Congressional Fellow. Prior to that he served on the Council on Legislation of the American Medical Association while practicing at the Washington Hospital Center, Washington, DC.



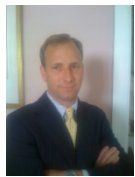
Anjali Jain, MD, is a senior researcher and managing consultant at The Lewin Group, a health and human services research and policy group. Formerly an assistant professor in pediatrics and health policy at Children's National Medical Center and The George Washington University, Dr. Jain's research has focused on children's health and public health, particularly obesity prevention and policy and other preventable conditions among

low-income and minority families. In addition to conducting research and clinical care, Dr. Jain teaches courses and workshops on medical writing and narrative and medical publishing. She is currently an Associate Editor at the journal *Academic Pediatrics*, where she was a co-founder of a narrative section called “In the Moment.” She is also a Fellow of the American Academy of Pediatrics and a Fellow of The Obesity Society and has served as the Chair of the Healthcare Subcommittee for the Maryland Childhood Obesity Committee.



Franmarie Kennedy, PhD, is acting director of the Health, Biomedical Science and Society policy program at the Aspen Institute. Over the course of her career, she has worked in all aspects of education and health policy, communications, marketing and fundraising as a consultant to non-profit organizations, foundations, corporations and as an executive in both government and academic institutions. Previously, Dr. Kennedy served on two White House staffs formulating domestic policy and held executive positions at the U.S.

Department of Education and the National Institute for Literacy. She also has served in management positions at Georgetown University and American University. Since 1995, Dr. Kennedy has produced several documentaries for television. Over the past 8 years, she has concentrated on television and multi-media projects as a consultant to MacNeil-Lehrer Productions, producers of *The NewsHour with Jim Lehrer*. She also has served as a consultant to The American Red Cross, The American Physical Society, The American Medical Women’s Association, the National Library of Medicine, EPC-global Inc. and The National Association of Chain Drug Stores.



Lewis Mattison is staff vice president for WellPoint FutureVentures at WellPoint, Inc., where he focuses on the development of new businesses that extend beyond WellPoint’s core business models today. Prior to WellPoint, Lewis consulted full-time to a \$700M private-equity fund (Health Evolution Partners) focusing on investments in healthcare companies across the spectrum of late-stage buyout to earlier stage venture capital. Prior to Health Evolution Partners, Lewis served as senior advisor to the National Coordinator for

Health IT, where he helped in the establishment of this office as a formal, new entity within the federal government at the U.S. Department of Health and Human Services. Prior to HHS, Lewis served in various capacities in management consulting for 10 years with an exclusive industry focus on healthcare services and domain specialization in strategic planning, revenue cycle/reimbursement, and health IT.



Daniel Newton, PhD, is the director of behavioral economics for WellPoint, Inc., and is a part of the Clinical Strategy and Innovation Team. He is responsible for the application of behavioral techniques within WellPoint’s clinical interventions. He has more than 30 years of diversified experience in healthcare, consulting, education, research, as an entrepreneur focused on health management strategy, population health management and behavior change.



Brent Parton, MEd, is a founder of SHOUTAmerica an organization launched to assert the interests of young Americans in a sustainable, effective and equitable healthcare system. He currently serves as program director, overseeing the development and management of SHOUTAmerica’s educational programming, outreach and research. During healthcare reform, Brent worked with national youth advocacy organizations to cultivate a network

of more than 10,000 young Americans committed to building support for policy provisions pertinent to their health and economic interests. He recently led the formulation of SHOUTAmerica’s post-reform strategy to accelerate the impact of the Millennial generation on the nation’s health challenges as patients, future health professionals as well as voters. He has also served as a consultant for the World Bank, as well as an educator abroad.